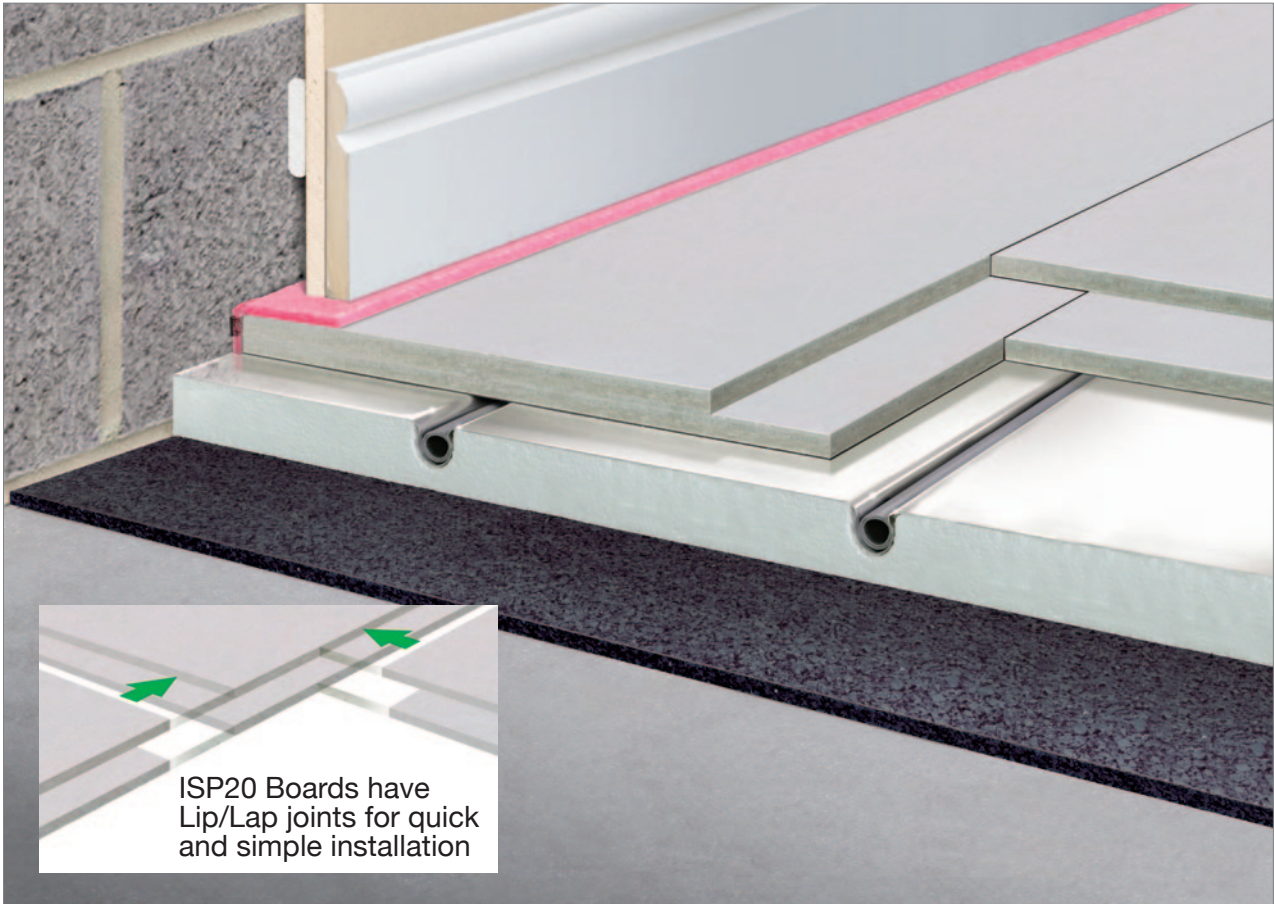


## ISOSONIC SCREED PLANK 20 - ISP20 ACOUSTIC FLOORING SYSTEM



Screed Plank System with Isorubber Standard acoustic underlay and optional UFH pipe insulation tray

**Versatile and easy-fit dry installation screed plank floor system offering time and cost-saving solutions for all floor types- achieves high acoustic performance with shallow build depth.**

It is adaptable to any floor; newbuild or refurbishment, and reduces both airborne and impact sound transmission to meet Approved Document Part E sound insulation requirements.

The secret to it's success is the combination of two core products- **Isosonic Screed Plank** and **Isorubber Resilient Layer**. This versatile system can be adapted to create the ideal solution for your project, with a build depth of just 23mm-28mm depending on your floor type.

### Isosonic Screed Plank

- Ideal for use with under floor heating- low thermal resistance and even heat distribution
- Hard & robust cementitious gypsum plank with high density & mass.
- Suitable for use as a floating floor "dry screed" - saving on construction time and screed pumping.
- Provides a stable and water resistant surface.

### Isorubber resilient layers

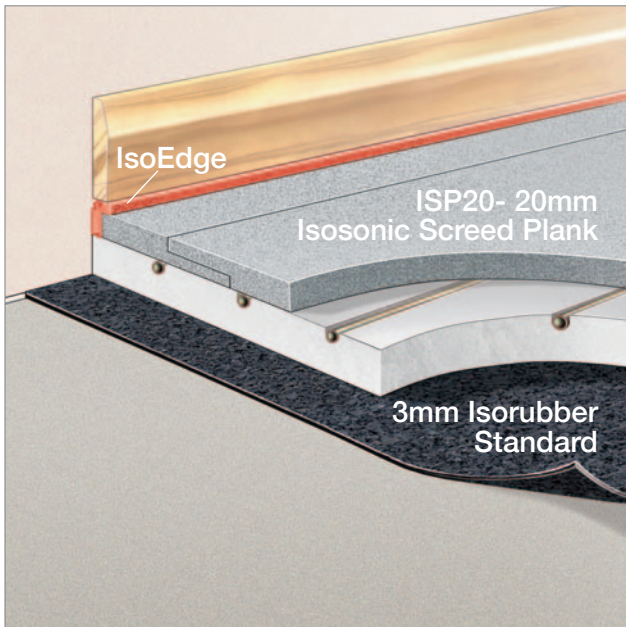
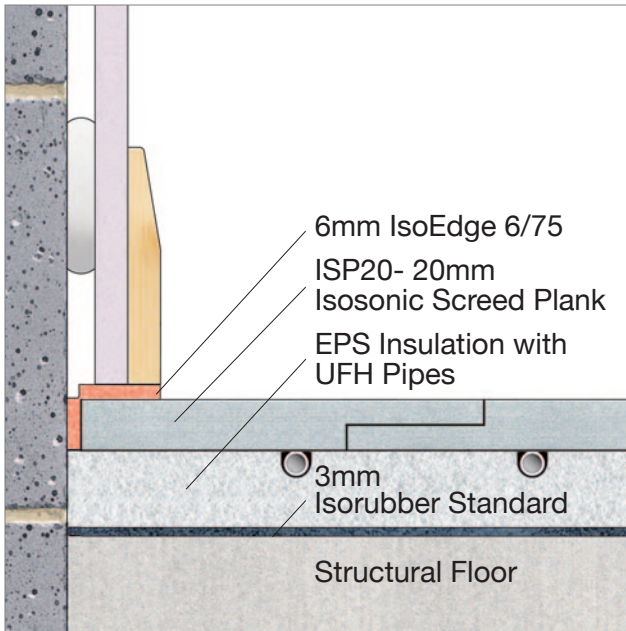
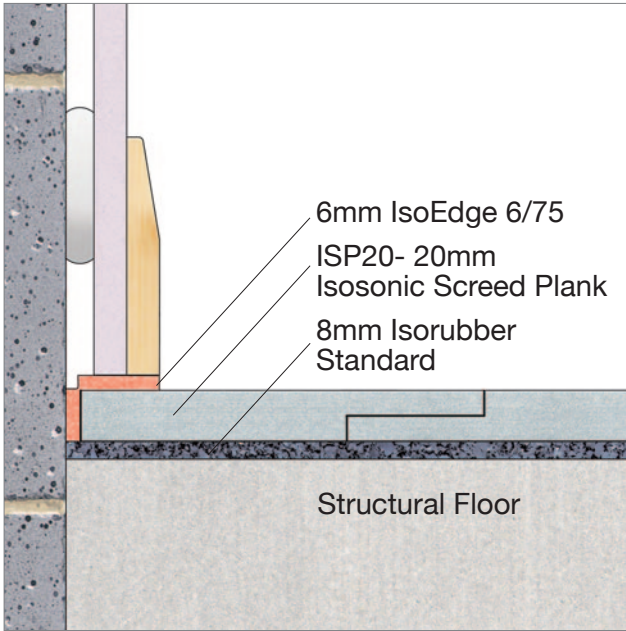
- High performance acoustic isolation and vibration reduction.
- Resilient & durable.
- Suitable for most floor finishes.



Made from recycled waste rubber

For help choosing the right product for your project please contact Thermal Economics Technical Department on 01582 544255

For all our Acoustic & Thermal insulation products visit: [www.thermal-economics.co.uk](http://www.thermal-economics.co.uk)

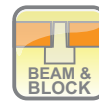


**ISP20 - 20mm thick fully supported floating floor panels.**

The IsoSonic Screed Plank acoustic systems have been designed to provide thin, easy to install solutions that comply with Approved Document Part E requirements for new build and refurbishment. Here's how we achieve this, with the option of underfloor heating.

- Must be fitted over a structural deck
- Suitable for new build or refurbishment projects
- High density 1200Kg/m<sup>3</sup>
- Suitable for any floor finish
- Ideal for use with under floor heating- low thermal resistance and even heat distribution
- Provides water resistant surface

**Suitable for use over structural decks including:**

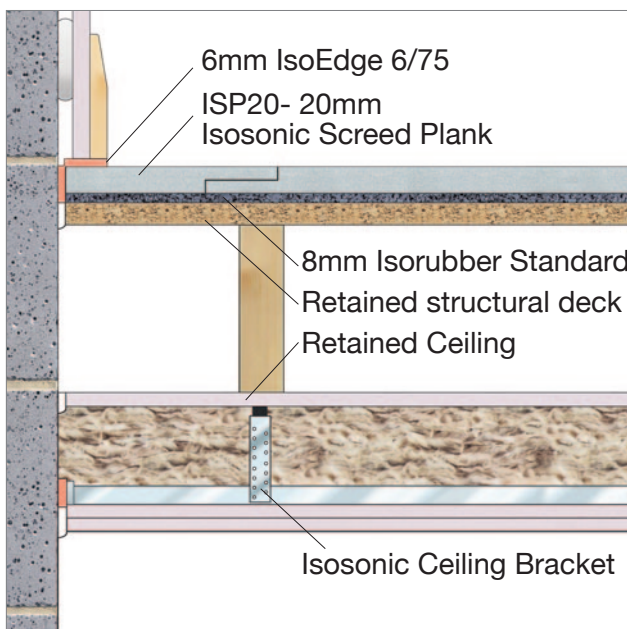
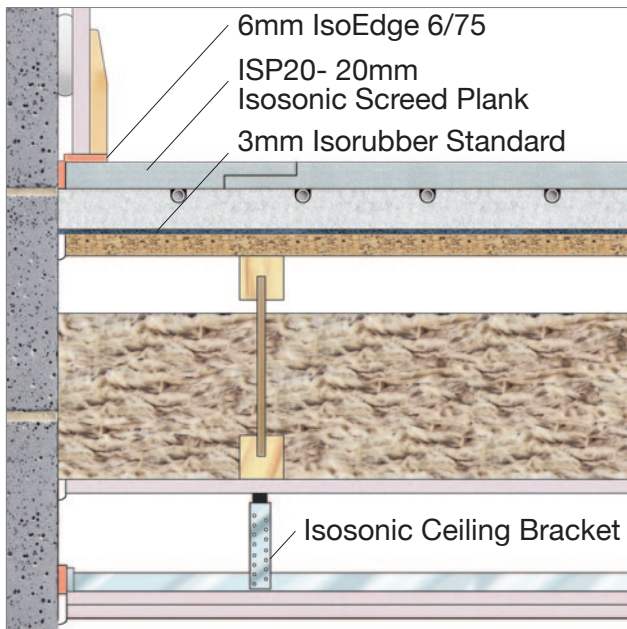
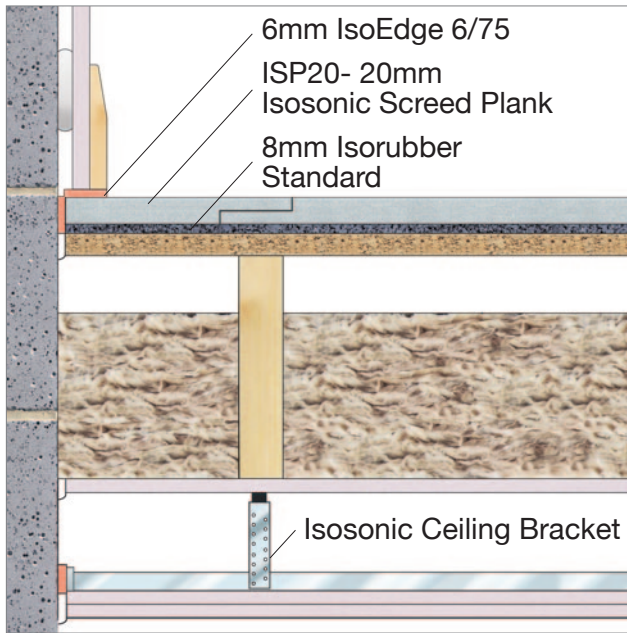


IsoSonic Screed Plank - ISP20				
Thickness	Density	Overlay	Structural deck	Plank size
20mm	1200 Kg/m <sup>3</sup>	✓	N/A	1500mm x 500mm

**Underfloor heating application.**

IsoSonic Screed Planks provide an even and speedy heat distribution making them the ideal floor covering to use with underfloor heating systems, helping to optimise efficiency and reduce energy costs.

IsoSonic Screed Planks are suitable for both warm water and electrical heating installations, so whatever type of system you choose IsoSonic Screed Plank is your perfect partner for underfloor heating.



### High Performance Solutions - Timber Floors

The Isosonic Screed Plank is perfectly suited to timber floor constructions, providing mass to improve acoustic performance and a robust, screed like finish.

Isosonic Screed Planks are utilised in our **High Performance** acoustic solutions for timber floors that are designed to exceed the new build or refurbishment requirements Approved Doc. Part E.

Suitable for use over the structural deck in all types of joisted floor including:



Also suitable for use with  
framed wall constructions.

While typical details can be seen on this page, the Isosonic Screed Planks can be used to acoustically improve most types of lightweight floor.

To discuss how Isosonic Screed Planks can be used in your project please contact our Technical Department on 01582 544255 or email [technical@thermal-economics.co.uk](mailto:technical@thermal-economics.co.uk)

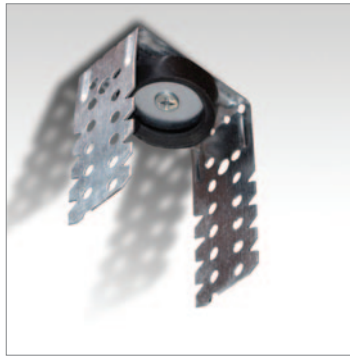
### Refurbishment of Timber Floors

In refurbishment projects it is possible to retain existing ceilings and floor boards / structural decks allowing for quick installation with minimal disruption.

# Isosonic Screed Plank

## Isosonic ceiling brackets- For Ceiling Channels

In the application of the Isosonic Screed Plank systems the acoustic performance can be further enhanced by the use of an advanced ceiling de-coupling system.



## Benefits of Isorubber over low density PUR/PE foams



**Acoustic insulation that does not lay flat makes the installation of Under Floor Heating difficult.**

When PE foam products are laid they retain the curvature of their packaging roll. This means that the thermal insulation boards required for the under floor heating system may not lay flat and makes the installation of pipes difficult.

Isorubber products do not suffer from this problem as they lay flat when unrolled.

Isorubber undergoes no appreciable elastic deformation under load and therefore suffers no long term loss of acoustic performance.

## ENVIRONMENTALLY FRIENDLY MATERIALS - RECYCLED & SUSTAINABLY SOURCED

Thermal Economics is an ISO 9001 and ISO 14001 certified company with a proven history of developing high performance innovative products using recycled and sustainable materials.

As the core of our Thermal Insulation we utilise **100% recyclable** EPS. Not only is EPS an excellent insulator, but also one



of the few materials given an **A+ environmental rating** by the BRE.

- Zero ODP- no blowing agents
- GWP- Less than 5

This demonstrates our passion for making a difference not just in the present, but for our future.



Made from recycled waste rubber

T: 01582 450814  
E: info@thermal-economics.co.uk  
W: www.thermal-economics.co.uk



Visit our website for mobile friendly installation guides



For help choosing the right product for your project please contact Thermal Economics Technical Department on 01582 544255

For all our Acoustic & Thermal insulation products visit: [www.thermal-economics.co.uk](http://www.thermal-economics.co.uk)